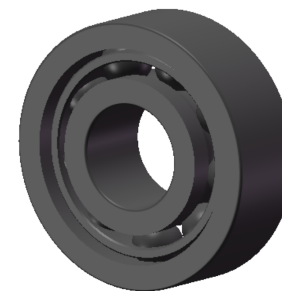


LILY BEARING



b:	25°	Contact Angle
R _{3,4} :	min 0.6 mm	Chamfer Dimension
R _{1,2} :	min 1.1 mm	Chamfer Dimension
D1:	114.2 mm	Shoulder Dia Of Outer Ring
d1:	100.8 mm	Shoulder Dia Of inner Ring
a:	34.2 mm	Distance From Side Face To Pressure Point

LILY[®]

SHANGHAI LILY BEARING LIMITED

Email: lilybearing@lily-bearing.com

Part
Number

71918/ACD/P4A Angular Contact Ball Bearings