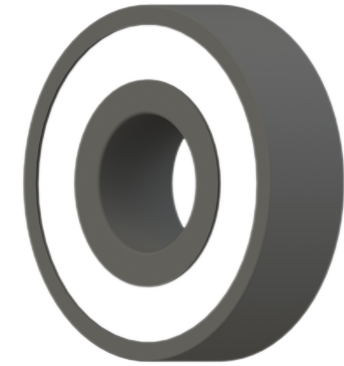


LILY BEARING



- b : 25° Contact Angle
- R<sub>3,4</sub>: min 0.15 mm Chamfer Dimension
- R<sub>1,2</sub>: min 0.3 mm Chamfer Dimension
- D1: 21.1 mm Shoulder Dia Of Outer Ring
- d1: 18.1 mm Shoulder Dia Of inner Ring
- a: 7.1 mm Distance From Side Face To Pressure Point

**LILY**<sup>®</sup>

SHANGHAI LILY BEARING LIMITED

Email: [lilybearing@lily-bearing.com](mailto:lilybearing@lily-bearing.com)

Part  
Number

CE71802SCPP  
Ceramic Angular Contact Ball Bearings