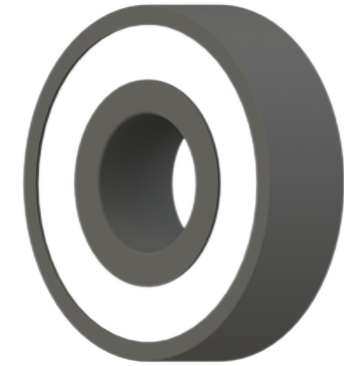


LILY BEARING



- b : 25° Contact Angle
- R_{3,4}: min 0.15 mm Chamfer Dimension
- R_{1,2}: min 0.3 mm Chamfer Dimension
- D1: 72.5 mm Shoulder Dia Of Outer Ring
- d1: 65.7 mm Shoulder Dia Of inner Ring
- a: 21.1 mm Distance From Side Face To Pressure Point

LILY[®]

SHANGHAI LILY BEARING LIMITED

Email: lilybearing@lily-bearing.com

Part
Number

CE71812SCPP
Ceramic Angular Contact Ball Bearings