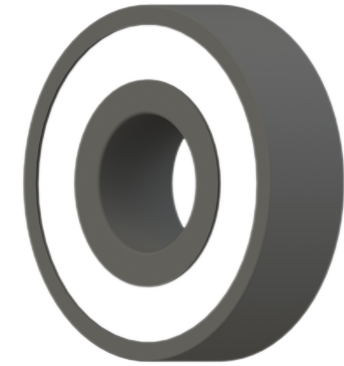


LILY BEARING



b :	25°		Contact Angle
R _{3,4} :	min 0.2	mm	Chamfer Dimension
R _{1,2} :	min 0.3	mm	Chamfer Dimension
D1:	23.7	mm	Shoulder Dia Of Outer Ring
d1:	18.9	mm	Shoulder Dia Of inner Ring
a:	8.5	mm	Distance From Side Face To Pressure Point

LILY[®]

SHANGHAI LILY BEARING LIMITED

Email: lilybearing@lily-bearing.com

Part
Number

CE71902SCPP
Ceramic Angular Contact Ball Bearings