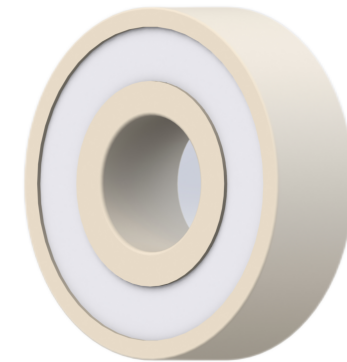


LILY BEARING



b:	25°	Contact Angle
R <sub>3,4</sub> :	min 0.3 mm	Chamfer Dimension
R <sub>1,2</sub> :	min 0.6 mm	Chamfer Dimension
D1:	mm	Shoulder Dia Of Outer Ring
d1:	57.95 mm	Shoulder Dia Of inner Ring
a:	20.3 mm	Distance From Side Face To Pressure Point

**LILY**<sup>®</sup>

SHANGHAI LILY BEARING LIMITED

Email: [lilybearing@lily-bearing.com](mailto:lilybearing@lily-bearing.com)

Part  
Number

CE71910ZRPP  
Ceramic Angular Contact Ball Bearings