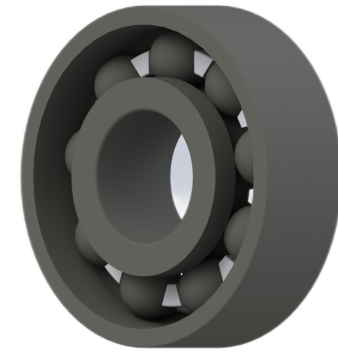


LILY BEARING



b:	25°	Contact Angle
R _{3,4} :	min 0.6 mm	Chamfer Dimension
R _{1,2} :	min 1.1 mm	Chamfer Dimension
D1:	mm	Shoulder Dia Of Outer Ring
d1:	114.92 mm	Shoulder Dia Of inner Ring
a:	38.2 mm	Distance From Side Face To Pressure Point

LILY[®]

SHANGHAI LILY BEARING LIMITED

Email: lilybearing@lily-bearing.com

Part
Number

CE71920SI
Ceramic Angular Contact Ball Bearings