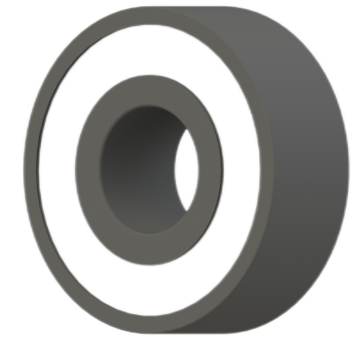


LILY BEARING



| | | | |
|--------------------|---------|----|---|
| b: | 25° | | Contact Angle |
| R _{3,4} : | min | mm | Chamfer Dimension |
| R _{1,2} : | min 1.5 | mm | Chamfer Dimension |
| D1: | 99.45 | mm | Shoulder Dia Of Outer Ring |
| d1: | 86.55 | mm | Shoulder Dia Of inner Ring |
| a: | 33 | mm | Distance From Side Face To Pressure Point |

LILY[®]

SHANGHAI LILY BEARING LIMITED

Email: lilybearing@lily-bearing.com

Part
Number

CE7213SIPP
Ceramic Angular Contact Ball Bearings