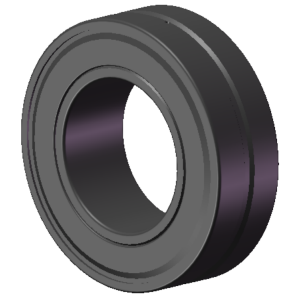


LILY BEARING



| | | | |
|--------------------|-------|----|-----------------------------------|
| D1: | ≈197 | mm | Shoulder/Recess Dia of Outer Ring |
| d1: | ≈155 | mm | Shoulder Dia of Inner Ring |
| b: | 8.3 | mm | Width Of Lubrication Groove |
| K: | 4.5 | mm | Dia of Lubrication Hole |
| R _{1,2} : | min 2 | mm | Chamfer Dimension |

LILY[®]

SHANGHAI LILY BEARING LIMITED

Email: lilybearing@lily-bearing.com

Part
Number

23028-2CS5/VT143
Spherical Roller Bearings