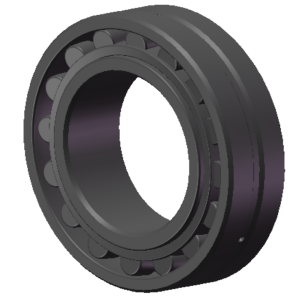


LILY BEARING



Tapered Bore, Taper 1:12

D1:	≈360	mm	Shoulder/Recess Dia of Outer Ring
d1:	≈295	mm	Shoulder Dia of Inner Ring
b:	16.7	mm	Width Of Lubrication Groove
K:	9	mm	Dia of Lubrication Hole
R <sub>1,2</sub> :	min 4	mm	Chamfer Dimension

**LILY**<sup>®</sup>

SHANGHAI LILY BEARING LIMITED

Email: [lilybearing@lily-bearing.com](mailto:lilybearing@lily-bearing.com)

Part  
Number

23052 CCK/W33  
Spherical Roller Bearings