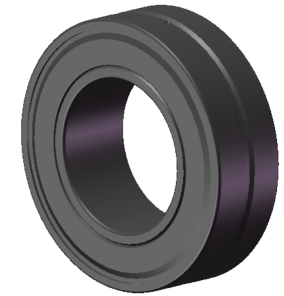


LILY BEARING



D1:	≈272	mm	Shoulder/Recess Dia of Outer Ring
d1:	≈202	mm	Shoulder Dia of Inner Ring
b:	13.9	mm	Width Of Lubrication Groove
K:	7.5	mm	Dia of Lubrication Hole
R _{1,2} :	min 3	mm	Chamfer Dimension

LILY[®]

SHANGHAI LILY BEARING LIMITED

Email: lilybearing@lily-bearing.com

Part
Number

23136-2CS5/VT143
Spherical Roller Bearings