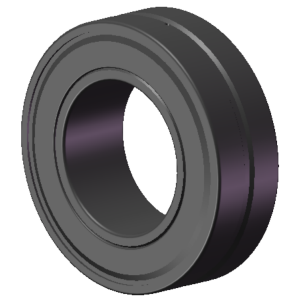


LILY BEARING



- D1: ≈284 mm Shoulder/Recess Dia of Outer Ring
- d1: ≈238 mm Shoulder Dia of Inner Ring
- b: 8.3 mm Width Of Lubrication Groove
- K: 4.5 mm Dia of Lubrication Hole
- R<sub>1,2</sub>: min 2.1 mm Chamfer Dimension

**LILY**<sup>®</sup>

SHANGHAI LILY BEARING LIMITED

Email: [lilybearing@lily-bearing.com](mailto:lilybearing@lily-bearing.com)

Part  
Number

23944-2CS/VT143  
Spherical Roller Bearings