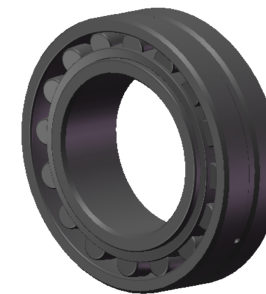


LILY BEARING



Tapered Bore, Taper 1:30

D1:	≈100	mm	Shoulder/Recess Dia of Outer Ring
d1:	≈84.2	mm	Shoulder Dia of Inner Ring
b:	5.5	mm	Width Of Lubrication Groove
K:	3	mm	Dia of Lubrication Hole
R <sub>1,2</sub> :	min 1.1	mm	Chamfer Dimension

**LILY**<sup>®</sup>

SHANGHAI LILY BEARING LIMITED

Email: [lilybearing@lily-bearing.com](mailto:lilybearing@lily-bearing.com)

Part  
Number

24015 CCK30/W33  
Spherical Roller Bearings