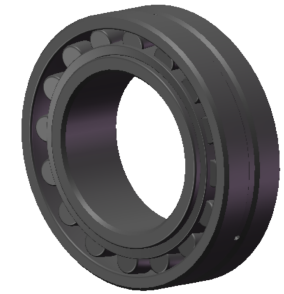


LILY BEARING



Tapered Bore, Taper 1:30

D1:	≈185	mm	Shoulder/Recess Dia of Outer Ring
d1:	≈155	mm	Shoulder Dia of Inner Ring
b:	6	mm	Width Of Lubrication Groove
K:	3	mm	Dia of Lubrication Hole
R _{1,2} :	min 2	mm	Chamfer Dimension

LILY[®]

SHANGHAI LILY BEARING LIMITED

Email: lilybearing@lily-bearing.com

Part
Number

24028 CCK30/W33
Spherical Roller Bearings