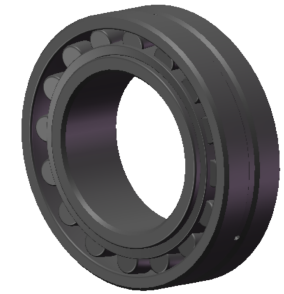


LILY BEARING



Tapered Bore, Taper 1:30

| | | | |
|--------------------|-------|----|-----------------------------------|
| D1: | ≈316 | mm | Shoulder/Recess Dia of Outer Ring |
| d1: | ≈265 | mm | Shoulder Dia of Inner Ring |
| b: | 11.1 | mm | Width Of Lubrication Groove |
| K: | 6 | mm | Dia of Lubrication Hole |
| R _{1,2} : | min 3 | mm | Chamfer Dimension |

LILY[®]

SHANGHAI LILY BEARING LIMITED

Email: lilybearing@lily-bearing.com

Part
Number

24048 CCK30/W33
Spherical Roller Bearings