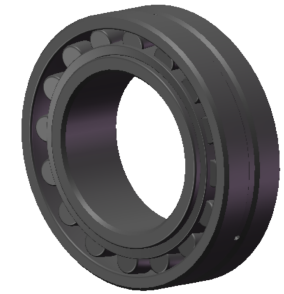


LILY BEARING



Tapered Bore, Taper 1:30

D1:	≈310	mm	Shoulder/Recess Dia of Outer Ring
d1:	≈248	mm	Shoulder Dia of Inner Ring
b:	11.1	mm	Width Of Lubrication Groove
K:	6	mm	Dia of Lubrication Hole
R _{1,2} :	min 4	mm	Chamfer Dimension

LILY[®]

SHANGHAI LILY BEARING LIMITED

Email: lilybearing@lily-bearing.com

Part
Number

24144 CCK30/W33
Spherical Roller Bearings