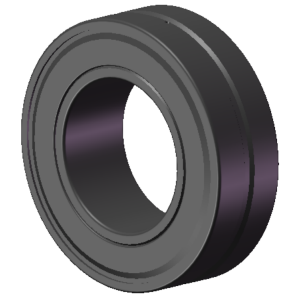


LILY BEARING



D1:	≈46.6	mm	Shoulder/Recess Dia of Outer Ring
d1:	≈30	mm	Shoulder Dia of Inner Ring
b:	4.4	mm	Width Of Lubrication Groove
K:	2	mm	Dia of Lubrication Hole
R _{1,2} :	min 1	mm	Chamfer Dimension

LILY[®]

SHANGHAI LILY BEARING LIMITED

Email: lilybearing@lily-bearing.com

Part
Number

BS2-2205-2RS/VT143
Spherical Roller Bearings