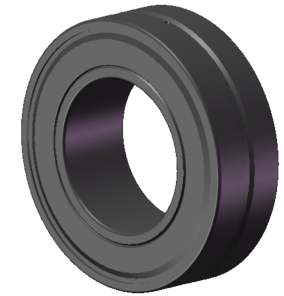


LILY BEARING



D1:	≈56.4	mm	Shoulder/Recess Dia of Outer Ring
d1:	≈35.8	mm	Shoulder Dia of Inner Ring
b:	4.4	mm	Width Of Lubrication Groove
K:	2	mm	Dia of Lubrication Hole
R <sub>1,2</sub> :	min 1	mm	Chamfer Dimension

**LILY**<sup>®</sup>

SHANGHAI LILY BEARING LIMITED

Email: [lilybearing@lily-bearing.com](mailto:lilybearing@lily-bearing.com)

Part  
Number

BS2-2206-2RS/VT143  
Spherical Roller Bearings