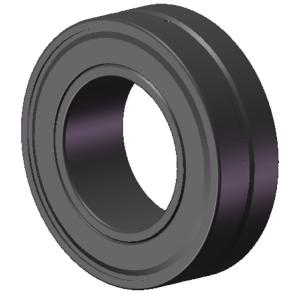


LILY BEARING



Tapered Bore, Taper 1:30

- $D1$ :  $\approx 1586$  mm Shoulder/Recess Dia of Outer Ring
- $d1$ :  $\approx 1227$  mm Shoulder Dia of Inner Ring
- $b$ : 22.3 mm Width Of Lubrication Groove
- $K$ : 12 mm Dia of Lubrication Hole
- $R_{1,2}$ : min 15 mm Chamfer Dimension

**LILY**<sup>®</sup>

SHANGHAI LILY BEARING LIMITED

Email: [lilybearing@lily-bearing.com](mailto:lilybearing@lily-bearing.com)

Part  
Number

**BS2-8138-2CS6K30/C4LGEA8**  
Spherical Roller Bearings