

# ***Bearings***

## Thrust Ball Bearings



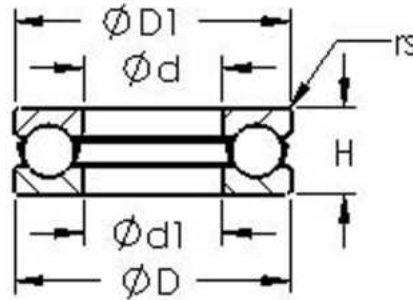
**LB**

# Table of Contents

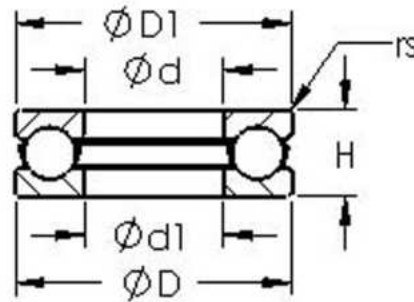


<b>1.51100 Series Thrust Ball Bearings.....</b>	<b>2</b>
<b>2.51200 Series Thrust Ball Bearings.....</b>	<b>5</b>
<b>3.51300 Series Thrust Ball Bearings.....</b>	<b>8</b>
<b>4.51400 Series Thrust Ball Bearings.....</b>	<b>10</b>

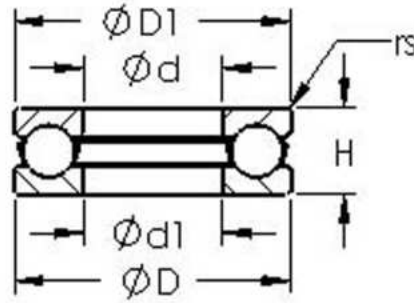




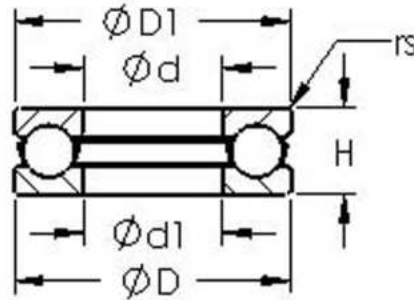
Bearing Number	Bearing Type	Bore Dia (d)	Outer Dia (D)	Width (B)	Dynamic Load Rating (Cr) (N)	Static Load Rating (Cor) (N)
51100	with grooved raceway(s)	10 mm	24 mm	9 mm	10000	14000
51101	with grooved raceway(s)	12 mm	26mm	9 mm	10300	15400
51102	with grooved raceway(s)	15 mm	28mm	9mm	10500	16800
51103	with grooved raceway(s)	17 mm	30mm	9mm	10800	18200
51104	with grooved raceway(s)	20 mm	35mm	10mm	14900	26600
51105	with grooved raceway(s)	25 mm	42mm	11mm	15300	30400
51106	with grooved raceway(s)	30 mm	47mm	11mm	18600	39900
51107	with grooved raceway(s)	35 mm	52mm	12mm	19100	44400
51108	with grooved raceway(s)	40 mm	60mm	13mm	26800	62900
51109	with grooved raceway(s)	45 mm	65mm	14mm	27200	69200
51110	with grooved raceway(s)	50 mm	70mm	14mm	28100	75500
51111	with grooved raceway(s)	55 mm	78mm	16mm	31100	81500
51112	with grooved raceway(s)	60 mm	85mm	17mm	37900	98600
51113	with grooved raceway(s)	65 mm	90mm	18mm	39200	108000
51114	with grooved raceway(s)	70 mm	95mm	18mm	39300	113000
51115	with grooved raceway(s)	75 mm	100mm	19mm	47200	140000



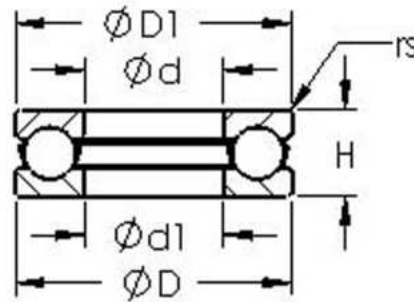
Bearing Number	Bearing Type	Bore Dia (d)	Outer Dia (D)	Width (B)	Dynamic Load Rating (Cr) (N)	Static Load Rating (Cor) (N)
51116	with grooved raceway(s)	80 mm	105mm	19mm	48500	145000
51117	with grooved raceway(s)	85 mm	110mm	19mm	48000	151000
51118	with grooved raceway(s)	90 mm	120mm	22mm	62300	190000
51120	with grooved raceway(s)	100 mm	135mm	25mm	79300	248000
51122	with grooved raceway(s)	110 mm	145mm	25mm	82600	278000
51124	with grooved raceway(s)	120 mm	155mm	25mm	84500	288000
51124M	with grooved raceway(s)	120 mm	155mm	25mm	84500	288000
51126	with grooved raceway(s)	130 mm	170mm	30mm	117000	392000
51128M	with grooved raceway(s)	140 mm	180mm	31mm	113000	392000
51130M	with grooved raceway(s)	150 mm	190mm	31mm	114000	420000
51132M	with grooved raceway(s)	160 mm	200mm	31mm	119000	448000
51134M	with grooved raceway(s)	170 mm	215mm	34mm	153000	564000
51136M	with grooved raceway(s)	180 mm	225mm	34mm	151000	582000
51138M	with grooved raceway(s)	190 mm	240mm	37mm	173000	671000
51140M	with grooved raceway(s)	200 mm	250mm	37mm	181000	715000
51144M	with grooved raceway(s)	220 mm	270mm	37mm	181000	760000



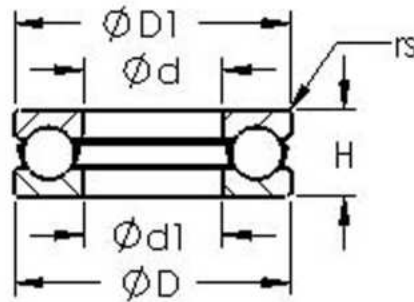
Bearing Number	Bearing Type	Bore Dia (d)	Outer Dia (D)	Width (B)	Dynamic Load Rating (Cr) (N)	Static Load Rating (Cor) (N)
51152M	with grooved raceway(s)	260 mm	320mm	45mm	254000	1110000
51156M	with grooved raceway(s)	280 mm	350mm	53mm	330000	1436000
51160M	with grooved raceway(s)	300 mm	380mm	62mm	412000	1863000
51164M	with grooved raceway(s)	320 mm	400mm	63mm	397000	1863000



Bearing Number	Bearing Type	Bore Dia (d)	Outer Dia (D)	Width (B)	Dynamic Load Rating (Cr) (N)	Static Load Rating (Cor) (N)
51200	with grooved raceway(s)	10 mm	26 mm	11 mm	12600	17100
51201	with grooved raceway(s)	12 mm	28mm	11mm	13000	19000
51202	with grooved raceway(s)	15 mm	32mm	12mm	15600	24400
51203	with grooved raceway(s)	17 mm	35mm	12mm	17100	27300
51204	with grooved raceway(s)	20 mm	40mm	14mm	22100	37700
51205	with grooved raceway(s)	25 mm	47mm	15mm	27800	50500
51206	with grooved raceway(s)	30 mm	52mm	16mm	28100	54300
51207	with grooved raceway(s)	35 mm	62mm	18mm	38800	78200
51208	with grooved raceway(s)	40 mm	68mm	19mm	46900	98300
51209	with grooved raceway(s)	45 mm	73mm	20mm	49300	112000
51210	with grooved raceway(s)	50 mm	78mm	22mm	56300	129000
51211	with grooved raceway(s)	55 mm	90mm	25mm	68800	159000
51212	with grooved raceway(s)	60 mm	95mm	26mm	70400	169000
51213	with grooved raceway(s)	65 mm	100mm	27mm	78500	191000
51214	with grooved raceway(s)	70 mm	105mm	27mm	72800	189000
51215	with grooved raceway(s)	75 mm	110mm	27mm	73700	199000

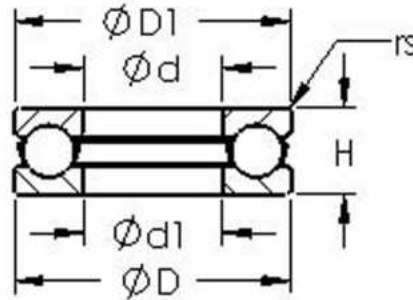


Bearing Number	Bearing Type	Bore Dia (d)	Outer Dia (D)	Width (B)	Dynamic Load Rating (Cr) (N)	Static Load Rating (Cor) (N)
51216	with grooved raceway(s)	80 mm	115mm	28mm	76100	209000
51217	with grooved raceway(s)	85 mm	125mm	31mm	94100	264000
51218	with grooved raceway(s)	90 mm	135mm	35mm	127000	338000
51220	with grooved raceway(s)	100 mm	150mm	38mm	149000	402000
51220M	with grooved raceway(s)	100 mm	150mm	38mm	143000	380000
51222	with grooved raceway(s)	110 mm	160mm	38mm	156000	447000
51222M	with grooved raceway(s)	110 mm	160mm	38mm	151000	425000
51224	with grooved raceway(s)	120 mm	170mm	39mm	170000	509000
51225	with grooved raceway(s)	130 mm	190mm	45mm	220000	653000
51226M	with grooved raceway(s)	130 mm	190mm	45mm	212000	620000
51230M	with grooved raceway(s)	150 mm	215mm	50mm	257000	795000
51232M	with grooved raceway(s)	160 mm	225mm	51mm	257000	795000
51234M	with grooved raceway(s)	170 mm	240mm	55mm	294000	966000
51236M	with grooved raceway(s)	180 mm	250mm	56mm	304000	1014000
51238M	with grooved raceway(s)	190 mm	270mm	62mm	351000	1242000
51240M	with grooved raceway(s)	200 mm	280mm	62mm	362000	1304000

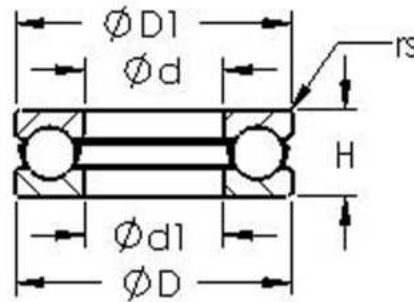


Bearing Number	Bearing Type	Bore Dia (d)	Outer Dia (D)	Width (B)	Dynamic Load Rating (Cr) (N)	Static Load Rating (Cor) (N)
51244M	with grooved raceway(s)	220 mm	300mm	63mm	365000	1366000
51248M	with grooved raceway(s)	240 mm	340mm	78mm	453000	1788000
51252M	with grooved raceway(s)	260 mm	360mm	79mm	456000	1878000
51256M	with grooved raceway(s)	280 mm	380mm	80mm	459000	1967000
51260M	with grooved raceway(s)	300 mm	420mm	95mm	619000	2794000
51268M	with grooved raceway(s)	340 mm	460mm	96mm	627000	3074000

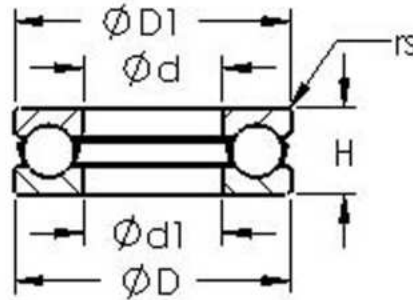




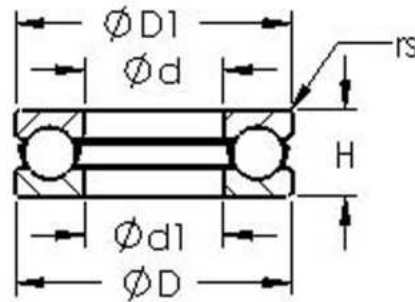
Bearing Number	Bearing Type	Bore Dia (d)	Outer Dia (D)	Width (B)	Dynamic Load Rating (Cr) (N)	Static Load Rating (Cor) (N)
51305	with grooved raceway(s)	25 mm	52 mm	18 mm	35400	61500
51306	with grooved raceway(s)	30 mm	60 mm	21 mm	42200	78700
51307	with grooved raceway(s)	35 mm	68 mm	24 mm	55400	105000
51308	with grooved raceway(s)	40 mm	78 mm	26 mm	68400	135000
51309	with grooved raceway(s)	45 mm	85 mm	28 mm	78900	164000
51310	with grooved raceway(s)	50 mm	95 mm	31 mm	95300	202000
51311	with grooved raceway(s)	55 mm	105 mm	35 mm	118000	246000
51311M	with grooved raceway(s)	55 mm	105 mm	35 mm	111000	226000
51312	with grooved raceway(s)	60 mm	110 mm	35 mm	123000	267000
51312M	with grooved raceway(s)	60 mm	110 mm	35 mm	116000	246000
51313	with grooved raceway(s)	65 mm	115 mm	36 mm	127000	287000
51313M	with grooved raceway(s)	65 mm	115 mm	36 mm	121000	267000
51314	with grooved raceway(s)	70 mm	125 mm	40 mm	153000	341000
51314M	with grooved raceway(s)	70 mm	125 mm	40 mm	153000	341000
51315	with grooved raceway(s)	75 mm	135 mm	44 mm	184000	426000
51315M	with grooved raceway(s)	75 mm	135 mm	44 mm	175000	396000



Bearing Number	Bearing Type	Bore Dia (d)	Outer Dia (D)	Width (B)	Dynamic Load Rating (Cr) (N)	Static Load Rating (Cor) (N)
51316	with grooved raceway(s)	80 mm	140 mm	44 mm	181000	426000
51316M	with grooved raceway(s)	80 mm	140 mm	44 mm	172000	396000
51317	with grooved raceway(s)	85 mm	150 mm	49 mm	290000	716000
51318M	with grooved raceway(s)	90 mm	155 mm	50 mm	202000	489000
51320	with grooved raceway(s)	100 mm	170 mm	55 mm	247000	628000
51320M	with grooved raceway(s)	100 mm	170 mm	55 mm	247000	628000
51322	with grooved raceway(s)	110 mm	190 mm	63 mm	319000	869000
51322M	with grooved raceway(s)	110 mm	190 mm	63 mm	304000	807000
51324M	with grooved raceway(s)	120 mm	210 mm	70 mm	347000	977000
51326M	with grooved raceway(s)	130 mm	225 mm	75 mm	392000	1162000
51328M	with grooved raceway(s)	140 mm	240 mm	80 mm	438000	1364000
51330M	with grooved raceway(s)	150 mm	250 mm	80 mm	432000	1364000
51332M	with grooved raceway(s)	160 mm	270 mm	87 mm	479000	1582000
51334M	with grooved raceway(s)	170 mm	280 mm	87 mm	496000	1704000
51336M	with grooved raceway(s)	180 mm	300 mm	95 mm	546000	1956000
51340M	with grooved raceway(s)	200 mm	340 mm	110 mm	656000	24140005



Bearing Number	Bearing Type	Bore Dia (d)	Outer Dia (D)	Width (B)	Dynamic Load Rating (Cr) (N)	Static Load Rating (Cor) (N)
51405	with grooved raceway(s)	25 mm	60 mm	24 mm	55000	89400
51406M	with grooved raceway(s)	30 mm	70 mm	28 mm	67300	113000
51407	with grooved raceway(s)	35 mm	80 mm	32 mm	86300	155000
51407M	with grooved raceway(s)	35 mm	80 mm	32 mm	80500	140000
51408M	with grooved raceway(s)	40 mm	90 mm	36 mm	105000	185000
51409	with grooved raceway(s)	45 mm	100 mm	39 mm	140000	262000
51409M	with grooved raceway(s)	45 mm	100 mm	39 mm	131000	236000
51410M	with grooved raceway(s)	50 mm	110 mm	43 mm	148000	274000
51411M	with grooved raceway(s)	55 mm	120 mm	48 mm	192000	358000
51412	with grooved raceway(s)	60 mm	130 mm	51 mm	222000	449000
51412M	with grooved raceway(s)	60 mm	130 mm	51 mm	206000	404000
51413M	with grooved raceway(s)	65 mm	140 mm	56 mm	217000	449000
51413	with grooved raceway(s)	65 mm	140 mm	56 mm	231000	494000
51414	with grooved raceway(s)	70 mm	150 mm	60 mm	247000	553000
51414M	with grooved raceway(s)	70 mm	150 mm	60 mm	232000	503000
51415M	with grooved raceway(s)	75 mm	160 mm	65 mm	298000	685000



Bearing Number	Bearing Type	Bore Dia (d)	Outer Dia (D)	Width (B)	Dynamic Load Rating (Cr) (N)	Static Load Rating (Cor) (N)
51416M	with grooved raceway(s)	80 mm	170 mm	68 mm	314000	751000
51416	with grooved raceway(s)	80 mm	170 mm	68 mm	314000	751000
51417M	with grooved raceway(s)	85 mm	180 mm	72 mm	349000	857000
51418M	with grooved raceway(s)	90 mm	190 mm	77 mm	378000	945000
51420M	with grooved raceway(s)	100 mm	210 mm	85 mm	445000	1217000
51422M	with grooved raceway(s)	110 mm	230 mm	95 mm	491000	1397000
51424M	with grooved raceway(s)	120 mm	250 mm	102 mm	531000	1590000
51426M	with grooved raceway(s)	130 mm	270 mm	110 mm	633000	2012000
51428M	with grooved raceway(s)	140 mm	280 mm	112 mm	626000	2012000
51430	with grooved raceway(s)	150 mm	300 mm	120 mm	668000	2242000